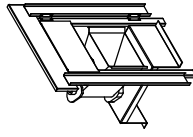
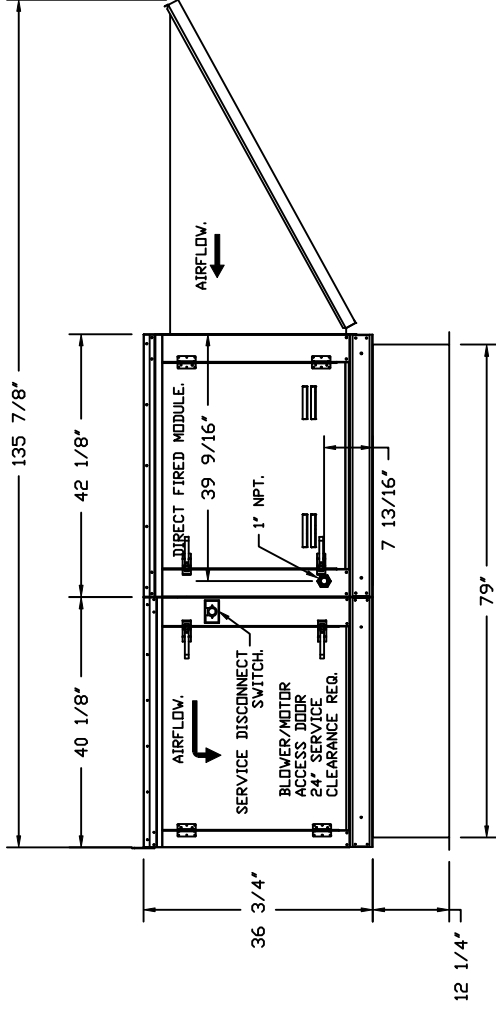
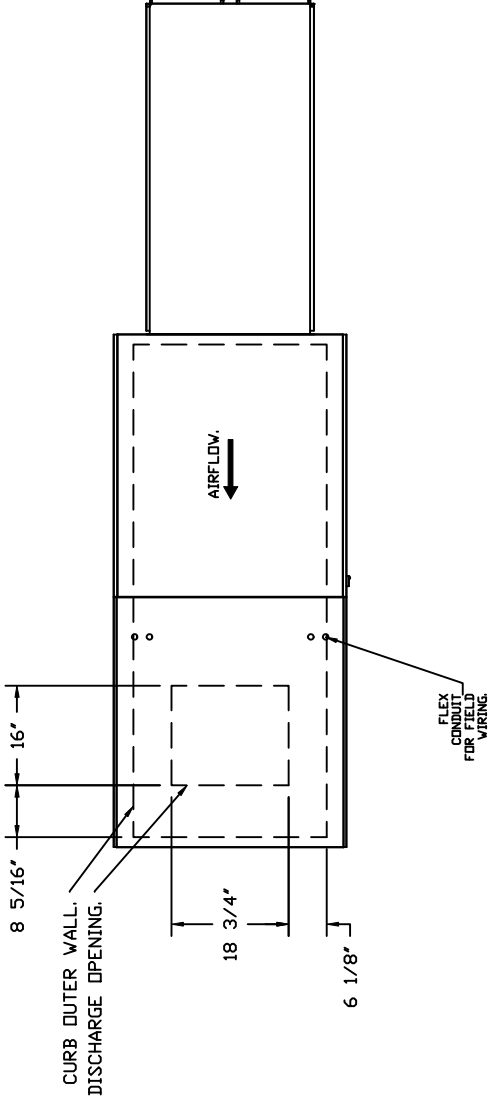


RUPP MODEL R2D.500-20D ~ 692 LBS.



DIRECT FIRED (DF) PROFILE PLATE ASSEMBLY

DIRECT FIREBURNER PROFILE PLATE SPECIFICATIONS

DESCRIPTION: DIRECT FIREBURNER PROFILE PLATE ASSEMBLY SHALL HAVE PATENTED GAS PATENT NO. US6468928, SELF-ADJUSTING PROFILE PLATES DESIGNED TO ENSURE PROPER AIR VELOCITY AND PRESSURE DROP ACROSS THE BURNER PROFILE PLATES. THE PROFILE PLATE ASSEMBLY SHALL BE MANUFACTURED FROM A SINGLE PIECE OF 20 GAUGE STEEL CONSTRUCTION. THE PROFILE PLATE ASSEMBLY SHALL BE MANUFACTURED FROM A SINGLE PIECE OF 20 GAUGE STEEL CONSTRUCTION. THE PROFILE PLATE ASSEMBLY SHALL BE MANUFACTURED FROM A SINGLE PIECE OF 20 GAUGE STEEL CONSTRUCTION. THE PROFILE PLATE ASSEMBLY SHALL BE MANUFACTURED FROM A SINGLE PIECE OF 20 GAUGE STEEL CONSTRUCTION.

ALL PROFILE PLATE ASSEMBLIES SHALL BE INCLUDED IN THE DF UNIT'S ETL LISTING AND COMPLY WITH COMBINED SAFETY STANDARDS ANSI Z83.4 AND CSA 37 NON-RECIRCULATING DF HEATERS AND ANSI Z83.18 RECIRCULATING DF HEATERS.

SPRING LOADED BURNER PROFILE PLATES ARE ENGINEERED TO AUTOMATICALLY REACT TO THE MOMENTUM OF A FRESH AIR STREAM, WITHOUT THE NEED FOR ANY MOTORS OR ACTUATORS TO MECHANICALLY ADJUST THEM WITH THIS FEATURE. ALL DF UNITS ARE DESIGNED FOR DEMAND CONTROL VENTILATION (DCV) REQUIREMENTS.

ALL PROFILE PLATE ASSEMBLIES SHALL BE INCLUDED IN THE DF UNIT'S ETL LISTING AND COMPLY WITH COMBINED SAFETY STANDARDS ANSI Z83.4 AND CSA 37 NON-RECIRCULATING DF HEATERS AND ANSI Z83.18 RECIRCULATING DF HEATERS.

PROFILE PLATE ASSEMBLY SHALL BE FORMED FROM 20 GAUGE STEEL.

PROFILE PLATES SHALL VARY IN SIZE PER UNIT.

PROFILE PLATES SHALL BE MANUFACTURED FROM A SINGLE PIECE OF 20 GAUGE STEEL CONSTRUCTION.

DESIGN SHALL INCORPORATE PROPERLY TORQUED, PERMANENTLY MOUNTED SPRING BUSHES.

SPRING BUSHES SHALL BE MADE FROM PLATED STEEL.

